

PROFILE

Installation depth:
77/86.4 mm

CONSTRUCTION

Aluminum construction
that has thermal chamber
with insulators and filling

COLOR

Wide Selections of colors

FITTINGS

Multi-point locking fittings of an
increased anti-corrosion protection,
optional Designo fitting, RC2 anti-
burglar, Tilt-First

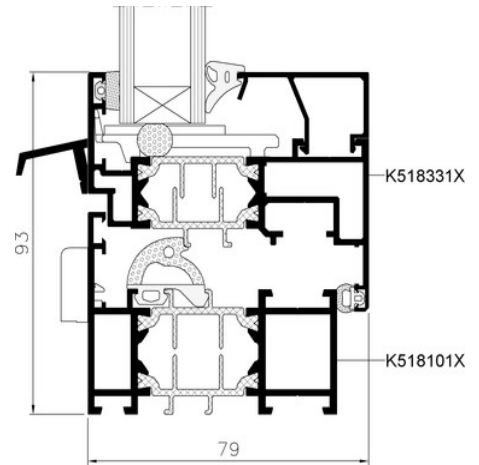
SEALS

Three seals



FEATURES

MAX DIMENSIONS	120" x 120" or 120" x 120"
INSTALLATION HARDWARE	CLIP
OPERATION	-TILD/TURN IN -SWING DOORS



PERFORMANCE

THERMAL RESISTANCE	U-Value as low as .23
STC	35-46
SHGC	as low as 0.17
AIR FILTRATION	0.01 cfm/ft ²
WATER LEAKAGE	12.1 psf